

# Presona Control System Premi

## PREMI (PREsona Machine Interface)

PLC control system with 10" Colour Touch Screen with animations, setting of baling parameters and indication of production data for 50 baling programmes.

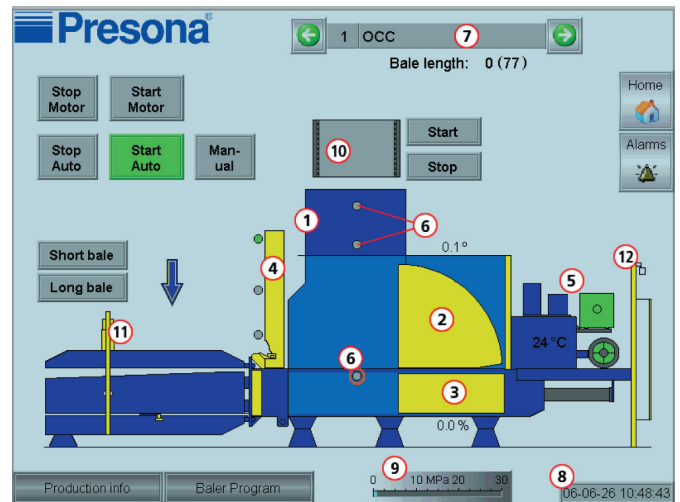
### Three access levels (log-in levels)

- Level 1 Operator
- Level 2 Manager (e.g. Plant Manager)
- Level 3 Presona



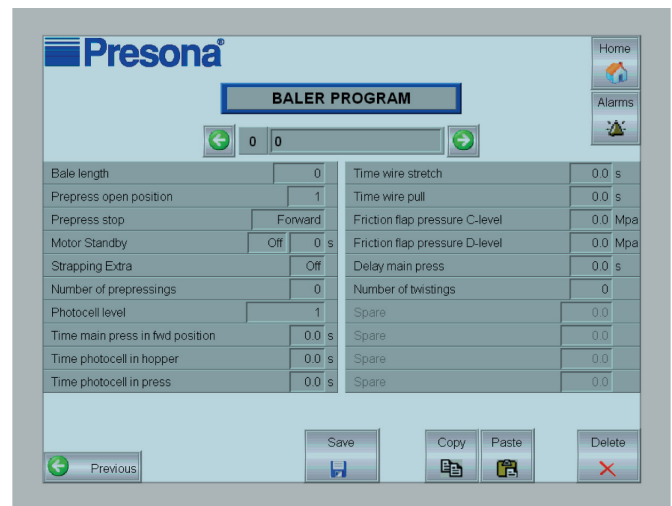
### Functions Level 1

- Language selection
- Selection and change of baling programme
- Indication of current values, e.g. bale length, pressure and temperature
- Indication of sensor status for pressing- and strapping functions
- Indication (animation) of press movements (prepress + main press)
- Automatic and manual mode of operation
- Error indications
- Indication of production data, e.g. bales per press programme
- Indication of service intervals, e.g. time left until next filter change



### Functions Level 2

- All functions in Level 1
- Change of user name and log in data
- Programming of the 50 baling programmes
- Indication of production data, resetting of bales per programme
- Indication of hours per log-in
- Transfer of production data via USB-port for printed reports



### Functions Level 3

- All functions in Levels 1 and 2
- Setting of machine specific functions
- Certain adjustments and updates of PLC software

The Premi is standard on the following models: LP 65 VHK, LP 80 VH, LP 100 CH, LP 100 DH, LP 140 CH and LP 140 XH  
As part of our continuing product improvement, specifications are subject to change without notice.

**Presona**<sup>®</sup>  
A Member of the Tomra Group

# Presona Control System MiniPremi

## MiniPREMI (PREsona Machine Interface)

PLC control system with 5,7" Monochrome Touch Screen with animations, setting of baling parameters and indication of production data for 15 baling programmes.

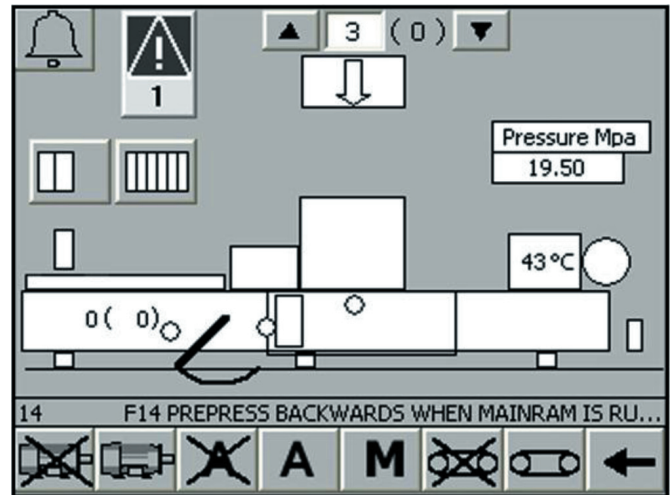
### Three access levels (log-in levels)

- Level 1 Operator
- Level 2 Manager (e.g. Plant Manager)
- Level 3 Presona



### Functions Level 1

- Language selection
- Cleaning of touch screen
- Selection and change of baling programme
- Indication of current values, e.g. bale length, pressure and temperature
- Indication of sensor status for pressing- and strapping functions
- Indication (animation) of press movements (prepress + main press)
- Automatic and manual mode of operation
- Error indications
- Indication of production data, e.g. bales per press programme
- Indication of service intervals, e.g. time left until next filter change



### Functions Level 2

- All functions in Level 1
- Programming of the 15 baling programmes
- Indication of production data, resetting of bales per programme
- Indication of status of all inputs on the control panel

▲	0	(0)	▼
Bale length ( 0 - 99 )		5	
Friction flap C-level (MPa)		18.00	
Friction flap D-level (MPa)		2.50	
Strapping Extra (0=Off,1=On)		0	
Time delay mainram front position (0,8 - 3,0 s)		0.8	
Motor off idle (0-20min)		0	
Number of mainpressings (1-20)		1	
Time delay photocell in baler ( 0,7 - 5,0 s)		0.7	
←	↓	☒	1/3

### Functions Level 3

- All functions in Levels 1 and 2
- Settings of machine specific functions
- Certain adjustments and updates of PLC software

The MiniPremi is standard on the following models: LP 40 OH, LP 40 EH, LP 50 EH, LP 50 VH and LP 65 VH (not VHK)  
As part of our continuing product improvement, specifications are subject to change without notice.

**Presona**<sup>®</sup>  
A Member of the Tomra Group